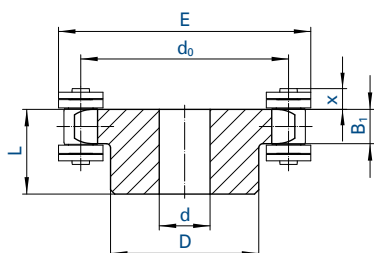


Chain			Pitch	Inner width	Roller Ø
	B_1	B_2	p	b_1 min.	d_1 max.
No.	mm	mm	mm	mm	mm
513 SF	10,6	20,8	19,05	11,68	12
513 SFK	10,6	20,8	19,05	11,68	12
513 SFV	10,6	20,8	19,05	11,68	12

Number of teeth	PCD	Pilot bore Ø	Hub-Ø between sprockets
z	d_0		d_F
	mm	mm	mm
15+15	91,62	20	61
17+17	103,67	20	73
19+19	115,73	20	85

Other sprockets made of stainless steel or plastic are available on request.

Sprockets for hollow pin chains 01650

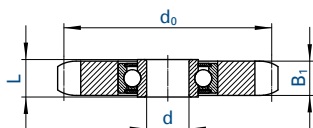


Chain	Pitch	Inner width	Roller Ø	Hollow pin Ø	Width over hollow pin	Plate height	Number of teeth	Sprocket dimensions						
								B_1	d_0	d	D	L	E	x
	p	b_1 min.	d_1 max.	d_1 max.	d_1 max.	g max.	z	mm	mm	mm	mm	mm	mm	mm
No.	mm	mm	mm	mm	mm	mm		mm	mm	mm	mm	mm	mm	mm
01650	50,8	10	30	8,2	27	26	7	9	117,08	20	80	40	148	10
01650	50,8	10	30	8,2	27	26	12	9	196,28	30	110*	50	227	10
01650	50,8	10	30	8,2	27	26	15	9	244,33	30	120*	50	275	10
01650	50,8	10	30	8,2	27	26	18	9	292,55	30	140*	50	323	10

* welded hub

We supply sprockets with custom bore and groove according to specifications.

Sprockets with integrated ball bearing



Chain	ISO	Pitch	Inner width	Roller Ø	Width over pin	Jockey sprocket	Number of teeth	d_0	B_1	Bearing		Load ratings		
										d + 0,3 + 0,1	L	C dyn.	C_0 stat.	
No.	No.	mm	inch	mm	mm	No.		mm	mm	mm	mm	kN	kN	
455	06B-1	9,525	3/8	5,72	6,35	13,5	SPR 455	21	63,91	5,3	16	18,3	7,5	4,5
331	081	12,700	1/2	3,30	7,75	10,2	SPR 331	18	73,14	3,0	16	18,3	7,5	4,5
332	-	12,700	1/2	4,88	7,75	11,2	SPR 332	18	73,14	4,5	16	18,3	7,5	4,5
462	08B-1	12,700	1/2	7,75	8,51	17,0	SPR 462	18	73,14	7,2	16	18,3	7,5	4,5
501	10B-1	15,875	5/8	9,65	10,16	19,6	SPR 501	17	86,39	9,1	16	18,3	7,5	4,5
513	12B-1	19,050	3/4	11,68	12,07	22,7	SPR 513	15	91,62	11,1	16	18,3	7,5	4,5
548	16B-1	25,400	1	17,02	15,88	36,1	SPR 548	12	98,14	16,2	20	17,7	10,1	6,3
563	20B-1	31,750	1 1/4	19,56	19,05	43,2	SPR 563	13	132,67	18,5	25	21,0	11,0	7,1

Made of steel with a strength of 500 - 600 N/mm².