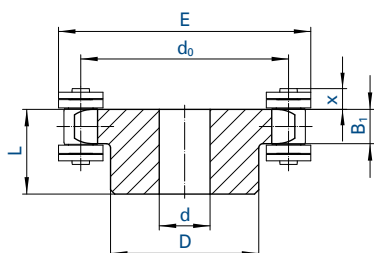


Chain			Pitch	Inner width	Roller Ø
	B <sub>1</sub>	B <sub>2</sub>	p	b <sub>1</sub> min.	d <sub>1</sub> max.
No.	mm	mm	mm	mm	mm
513 SF	10,6	20,8	19,05	11,68	12
513 SFK	10,6	20,8	19,05	11,68	12
513 SFV	10,6	20,8	19,05	11,68	12

Number of teeth	PCD	Pilot bore Ø	Hub-Ø between sprockets
z	d <sub>0</sub>		d <sub>F</sub>
	mm	mm	mm
15+15	91,62	20	61
17+17	103,67	20	73
19+19	115,73	20	85

Other sprockets made of stainless steel or plastic are available on request.

## Sprockets for hollow pin chains 01650

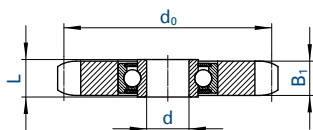


Chain	Pitch	Inner width	Roller Ø	Hollow pin Ø	Width over hollow pin	Plate height	Number of teeth	Sprocket dimensions						
								B <sub>1</sub>	d <sub>0</sub>	d	D	L	E	x
	p	b <sub>1</sub> min.	d <sub>1</sub> max.	d <sub>1</sub> max.	d <sub>1</sub> max.	g max.	z	mm	mm	mm	mm	mm	mm	mm
No.	mm	mm	mm	mm	mm	mm		mm	mm	mm	mm	mm	mm	mm
01650	50,8	10	30	8,2	27	26	7	9	117,08	20	80	40	148	10
01650	50,8	10	30	8,2	27	26	12	9	196,28	30	110*	50	227	10
01650	50,8	10	30	8,2	27	26	15	9	244,33	30	120*	50	275	10
01650	50,8	10	30	8,2	27	26	18	9	292,55	30	140*	50	323	10

\* welded hub

We supply sprockets with custom bore and groove according to specifications.

## Sprockets with integrated ball bearing



Chain	ISO	Pitch	Inner width	Roller Ø	Width over pin	Jockey sprocket	Number of teeth	d <sub>0</sub>	B <sub>1</sub>	Bearing		Load ratings	
										d + 0,3 + 0,1	L	C dyn.	C <sub>0</sub> stat.
		p	b <sub>1</sub> min.	d <sub>1</sub> max.	l <sub>1</sub> max.	No.	z	mm	mm	mm	mm	kN	kN
No.	No.	mm inch	mm	mm	mm	No.		mm	mm	mm	mm	kN	kN
455	06B-1	9,525 3/8	5,72	6,35	13,5	SPR 455	21	63,91	5,3	16	18,3	7,5	4,5
331	081	12,700 1/2	3,30	7,75	10,2	SPR 331	18	73,14	3,0	16	18,3	7,5	4,5
332	-	12,700 1/2	4,88	7,75	11,2	SPR 332	18	73,14	4,5	16	18,3	7,5	4,5
462	08B-1	12,700 1/2	7,75	8,51	17,0	SPR 462	18	73,14	7,2	16	18,3	7,5	4,5
501	10B-1	15,875 5/8	9,65	10,16	19,6	SPR 501	17	86,39	9,1	16	18,3	7,5	4,5
513	12B-1	19,050 3/4	11,68	12,07	22,7	SPR 513	15	91,62	11,1	16	18,3	7,5	4,5
548	16B-1	25,400 1	17,02	15,88	36,1	SPR 548	12	98,14	16,2	20	17,7	10,1	6,3
563	20B-1	31,750 1 1/4	19,56	19,05	43,2	SPR 563	13	132,67	18,5	25	21,0	11,0	7,1

Made of steel with a strength of 500 - 600 N/mm<sup>2</sup>.